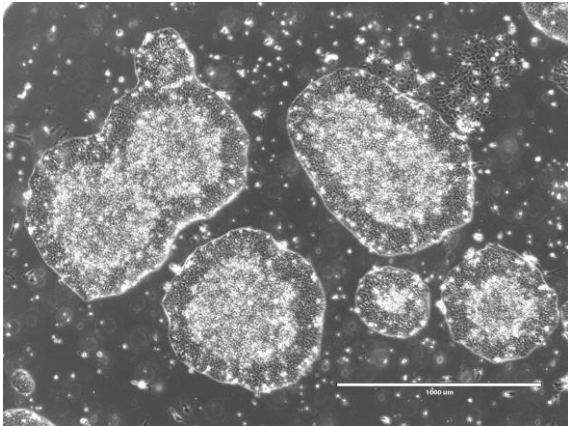
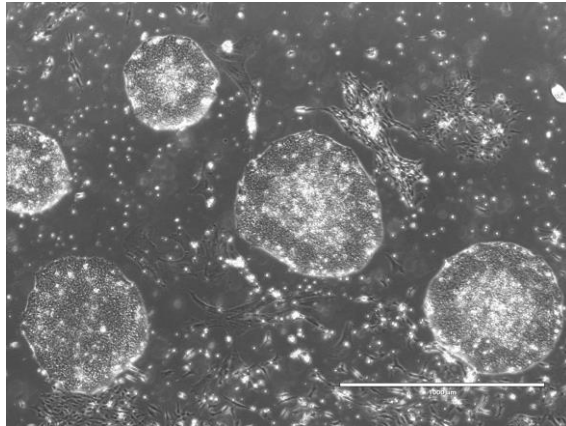


【 CiRA-j-1442 】 Morphology of iPSC colonies

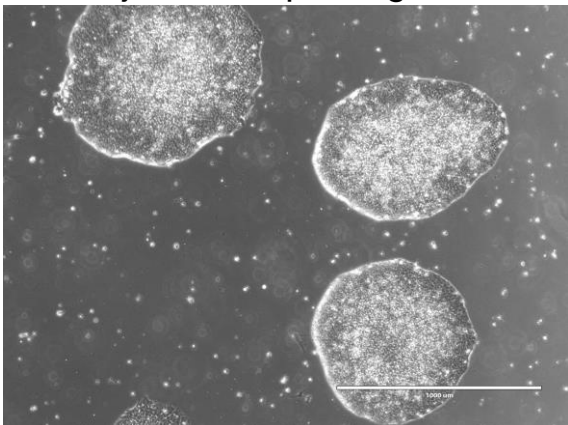
CiRA-j-1442-A: passage-3



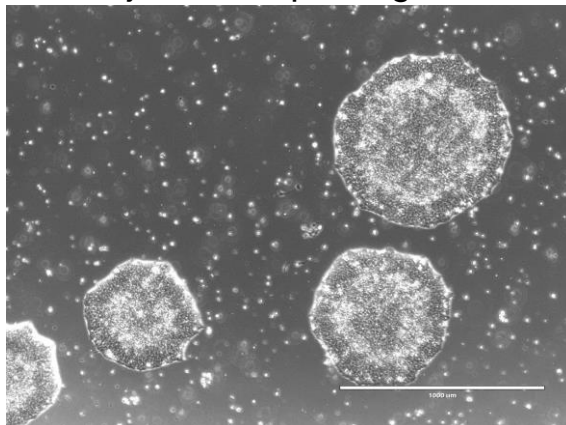
CiRA-j-1442-B: passage-3



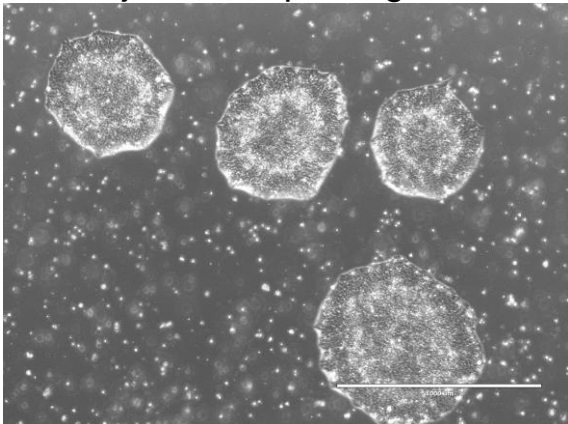
CiRA-j-1442-C: passage-3



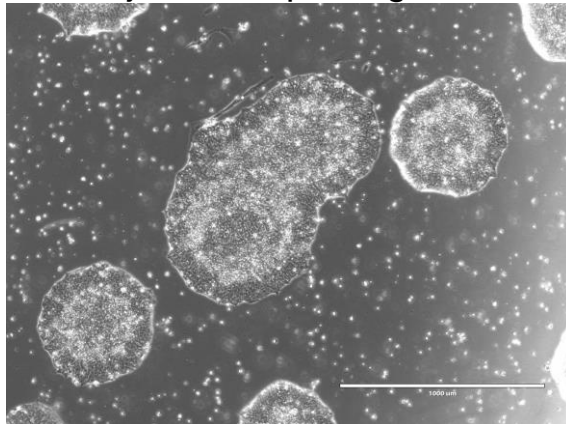
CiRA-j-1442-D: passage-3



CiRA-j-1442-E: passage-3



CiRA-j-1442-F: passage-3



(All images were captured at 4x magnification)